

# PRODUCT BROCHURE

19" Data Racks

# Wall Mounted IP66 19" Data Racks

**SDW**

Steel | Powder Coated

**SINGLE DOOR | IP66 IK10 | (OPTIONAL HINGED REAR SWING FRAME)**



The IP Enclosures SDW range of wall mounted IP66 19" data racks are designed for outdoor applications to house sensitive data network equipment in harsh environments. They are suitable for internal and external installations. All IP Enclosures are built to precision to ensure consistent high quality standards.

## Features & Specifications

# SDW

IP Enclosures SDW range of IP66 19" data racks are designed for outdoor applications to house sensitive data network equipment in harsh environments. They are suitable for internal and external installations. All IP Enclosures are built to precision to ensure consistent high quality standards.

**Protection:** IP66 IK10

**Standard:** IEC/EN62208, AS/EN/IEC60529, EIA-310-D, RoHS



**Material:**

- Enclosure Body: 1.5mm galvanised steel sheet
- Enclosure Door: 1.5mm galvanised steel sheet
- 19" Data Rack Rails: 1.5mm galvanised steel sheet
- Enclosure Seal: Polyurethane. UL listed.

**Body & 19" Rails:** The robust monoblock body is 1.5mm galvanised steel sheet. Flat face sealing surfaces increase seal life. Pre-fitted blind nutserts are incorporated to accommodate wall mounting brackets to eliminate drilling to retain IP rating. The profiled roof design protrudes past the seal, flush with the front of the door face. A galvanised steel gland plate is also incorporated into the bottom face. 19" data rack rails are fitted. 600mm deep racks include front and rear rails.

**Door:** The surface mounted door is 1.5mm galvanised steel sheet. It incorporates concealed removable hinges with captive pins. Doors are also designed for a 110° opening. Each door incorporates a high quality machine-applied foamed in place (FIP) Polyurethane seal.

NOTE: Hinged Rear Swing Frame option available. Refer to table below.

**Seal:** A high quality machine-applied full perimeter UL listed Polyurethane seal foamed in place (FIP) provides excellent sealing over a long life. Temperature resistance -40°C to 80°C (160°C short term loading).

**Lock:** Chrome 5mm double bit insert quarter turn lock with key. A full range of locking solutions are available upon request.

**Gland Plate:** Gland plates are incorporated into the bottom face of the enclosure for cable management. The size and quantity vary according to enclosure size.

**Surface Treatment:** UL approved epoxy polyester powder coated with a textured finish 80-120 micron average thickness.

Standard Colour: RAL7035 (Other colours available upon request).

**Accessories:** A range of data rack accessories are available.



Part Number	Part Number (Optional)	Size	Part Number Suffix
<b>Standard</b>	<b>Rear Swing Frame</b>	<b>U/RU x Depth (mm)</b>	<b>Optional Colours</b>
IP-SDW4RU30	IP-SDH4RU30	4RU x 300 Deep 19" Data Rack	-BLK
IP-SDW6RU30	IP-SDH6RU30	6RU x 300 Deep 19" Data Rack	-BLK
IP-SDW6RU45	IP-SDH6RU45	6RU x 450 Deep 19" Data Rack	-BLK
IP-SDW9RU45	IP-SDH9RU45	9RU x 450 Deep 19" Data Rack	-BLK
IP-SDW12RU45	IP-SDH12RU45	12RU x 450 Deep 19" Data Rack	-BLK
IP-SDW12RU60	IP-SDH12RU60	12RU x 600 Deep 19" Data Rack	-BLK
IP-SDW15RU60	IP-SDH15RU60	15RU x 600 Deep 19" Data Rack	-BLK
IP-SDW21RU60	IP-SDH21RU60	21RU x 600 Deep 19" Data Rack	-BLK

# Floor Standing IP66 19" Data Racks

## Steel | Powder Coated

**SD**

**SINGLE DOOR | IP66 IK10**



The IP Enclosures SD range of floor standing IP66 19" data racks are designed for outdoor applications to house sensitive data network equipment in harsh environments. They are suitable for internal and external installations. All IP Enclosures are built to precision to ensure consistent high quality standards.



## Features & Specifications

**IP Enclosures SD range of IP66 19" data racks are designed for outdoor applications to house sensitive data network equipment in harsh environments.**

**Protection:** IP66 IK10

**Standard:** IEC/EN62208, AS/EN/IEC60529, EIA-310-D, RoHS



**Material:**

- Enclosure Body: 1.5mm galvanised steel sheet
- Enclosure Doors: 1.5mm galvanised steel sheet
- 19" Data Rack Rails: 1.5mm galvanised steel sheet
- Enclosure Seal: Polyurethane

**Body:** The robust monoblock body is 1.5mm galvanised steel sheet. Flay face sealing surfaces increase seal life. A gland plate is also incorporated into the bottom face.

**Door/s:** Front and Rear surface mounted doors are 1.5mm galvanised steel sheet. They incorporate concealed removable hinges with captive pins. Doors are also designed for a 110° opening.

**Door Seal:** A high quality full perimeter seal provided excellent sealing over a long life. It is machine applied Polyurethane foamed in place (FIP).

**Locks:** 3 point locking system with key-lock swing handle. A full range of locking solutions are available upon request.

**Gland Plate:** Gland plates with seals are incorporated into the bottom face of the enclosure for cable management.

**Surface Treatment:** UL approved epoxy polyester powder coated with a textured finish. 80-120 micron average thickness. Standard Colour: RAL7035.

Part Number	Size	No. of U (RU)	Cabinet Size
SKU	19"	U/RU	U/RU H x W x D (mm)
IP-SD606040-RD	19"	12RU	12RU 650 x 600 x 400
IP-SD806040-RD	19"	16RU	16RU 850 x 600 x 400
IP-SD806060-RD	19"	16RU	16RU 850 x 600 x 600
IP-SD806080-RD	19"	16RU	16RU 850 x 600 x 800
IP-SD1206040-RD	19"	24RU	24RU 1200 x 600 x 400
IP-SD1206060-RD	19"	24RU	24RU 1200 x 600 x 600
IP-SD1206080-RD	19"	24RU	24RU 1200 x 600 x 800
IP-SD1606060-RD	19"	32RU	32RU 1550 x 600 x 600
IP-SD1606080-RD	19"	32RU	32RU 1550 x 600 x 800
IP-SD2006060-RD	19"	42RU	42RU 2000 x 600 x 600
IP-SD2006080-RD	19"	42RU	42RU 2000 x 600 x 800



# Floor Standing IP66 19" Data Racks

## Stainless Steel Grade 316/316L

**SSD**

**SINGLE DOOR | IP66 IK10**



The IP Enclosures SSD range of stainless steel floor standing IP66 19" data racks are designed to house sensitive data network equipment in harsh environments. They are suitable for internal and external installations. All IP Enclosures are built to precision to ensure consistent high quality standards.

## Features & Specifications

IP Enclosures SSD range of IP66 19" stainless steel data racks are designed to house sensitive data network equipment in harsh environments. They are suitable for internal and external installations.

**Protection:** IP66 IK10

**Standard:** IEC/EN62208, AS/EN/IEC60529, EIA-310-D, RoHS



**Material:**

- Enclosure Body: 1.5mm Grade 316/316L Stainless Steel
- Enclosure Door: 1.5mm Grade 316/316L Stainless Steel
- 19" Data Rack Rails: 1.5mm galvanised steel sheet
- Enclosure Seal: Polyurethane

**Surface Finish:** 0.4 micron Ra surface brushed finish

**Body:** The robust monoblock body is fabricated using 1.5mm Grade 316/316L Stainless Steel. Cutting, pressing and full continuous seam welding using precision automated manufacturing equipment to ensure accuracy and consistent high quality. Flat face sealing surfaces are provided to increase seal life. A stainless steel gland plate with seal is also incorporated into the bottom face.

**Door:** The robust surface mounted door is fabricated using 1.5mm Grade 316/316L Stainless Steel and incorporates concealed removable hinges with captive pins. The door is designed for a 110° opening. Each door contains a high quality machine-applied foamed in place (FIP) Polyurethane seal.

**Door Seal:** A high quality machine-applied continuous foamed in place (FIP) Polyurethane seal provides excellent sealing over a long life.

**Lock:** 3 point locking system with key-lock swing handle. A full range of locking solutions are available upon request.

**Gland Plate:** Gland plates are incorporated into the bottom face of the enclosure for cable management. They are provided with gaskets and fasteners. The size and quantity vary according to enclosure size.



Part Number	Size	No. of U (RU)	Cabinet Size
<b>SKU</b>	<b>19"</b>	<b>U/RU</b>	<b>U/RU H x W x D (mm)</b>
IP-SSD606040	19"	12RU	12RU 600 x 600 x 400
IP-SSD806040	19"	16RU	16RU 650 x 600 x 400
IP-SSD806060	19"	16RU	16RU 850 x 600 x 600
IP-SSD806080	19"	16RU	16RU 850 x 600 x 800
IP-SSD1206040	19"	24RU	24RU 850 x 600 x 400
IP-SSD1206060	19"	24RU	24RU 1200 x 600 x 600
IP-SSD1206080	19"	24RU	24RU 1200 x 600 x 800
IP-SSD1606060	19"	32RU	32RU 1600 x 600 x 600
IP-SSD1606080	19"	32RU	32RU 1550 x 600 x 800
IP-SSD2006060	19"	42RU	42RU 1550 x 600 x 600
IP-SSD2006080	19"	42RU	42RU 2000 x 600 x 800

# Heavy Duty IP66 19" Data Racks

Steel | Powder Coated

**SD-HD**

**SINGLE DOOR | IP66 IK10**



The IP Enclosures SD range of Heavy Duty IP66 19" Data Racks are designed for heavy duty outdoor applications to house sensitive data network equipment in harsh environments. They are suitable for internal and external installations.



# SD-HD

## Features & Specifications

IP Enclosures range of Heavy Duty IP66 19" Data Racks are designed for heavy duty outdoor applications to house sensitive data network equipment in harsh environments. They are suitable for internal and external installations. Heavy Duty Data Racks are constructed to withstand heavy loads associated with heavy equipment such as battery storage. Front and rear access doors are also provided.

**Protection:** IP66 IK10

**Standard:** IEC/EN62208, AS/EN/IEC60529, EIA-310-D, RoHS



**Material:**

- Enclosure Body: 1.5mm galvanised steel sheet
- Enclosure Doors: 1.5mm galvanised steel sheet
- 19" Data Rack Rails: 1.5mm galvanised steel sheet
- Enclosure Seal: Polyurethane

**Body:** The robust monoblock body is 1.5mm galvanised steel sheet. Precision automated manufacturing equipment ensures accuracy and consistent high quality. Flat face sealing surfaces increase seal life. A galvanised steel gland plate is also incorporated into the bottom face. The enclosure body and rails have been constructed to withstand heavy loads associated with heavy equipment such as heavy battery storage.

**Doors:** The front and rear surface mounted doors are 1.5mm galvanised steel sheet. They incorporate concealed removable hinges with captive pins. Doors are also designed for a 110° opening. Each door contains integral cable management rail studs and an M6 earth stud. The cable management rails are removable to provide more space for control components.

**Door Seal:** A high quality full perimeter seal provides excellent sealing over a long life. It is machine applied Polyurethane foamed in place (FIP).

**Locks:** 3 point locking system with key-lock swing handle. A full range of locking solutions are available upon request.

**Gland Plate:** Gland plates are incorporated into the bottom face of the enclosure for cable management. They are provided with gaskets and fasteners.

**Surface Treatment:** UL approved epoxy polyester powder coated with a textured finish. 80-120 micron average thickness. Standard Colour: RAL7035. (Other colours available upon request).



Part Number	Size	No. of U (RU)	Cabinet Size	Type
<b>SKU</b>	<b>19"</b>	<b>U/RU</b>	<b>U/RU H x W x D (mm)</b>	
IP-SD1676080	19"	30RU	30RU 1670 x 600 x 800	Heavy Duty
IP-SD16712580	19" x 2 (Double Bay)	30RU x 2	30RU 1670 x 1250 x 800	Heavy Duty
IP-SD16760100	19"	30RU	30RU 1670 x 600 x 100	Heavy Duty
IP-SD1976080	19"	36RU	36RU 1970 x 600 x 800	Heavy Duty
IP-SD19712580	19" x 2 (Double Bay)	36RU x 2	36RU 1970 x 1250 x 800	Heavy Duty
IP-SD19760100	19"	36RU	36RU 1970 x 600 x 1000	Heavy Duty

## Accessories

### 19" Data Rack Accessories

## 19" Accessories



The IP Enclosures range of 19" rack-mounted DIN rail, distribution panels and shelves provide flexibility to fit DIN mounted electrical and control components into 19" racks.

## Features & Specifications

# 19" Accessories

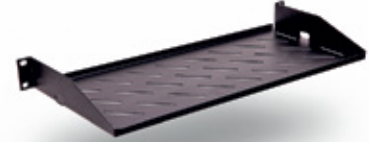
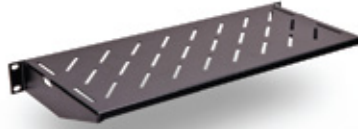
**Standard:** Compatible with 19" racks EIA-310-D, RoHS

### 1RU 19" Fixed Shelves

Part Number: IP-RCLF120  
Depth: 200mm

Part Number: IP-RCLF130  
Depth: 300mm

Part Number: IP-RCLF140  
Depth: 400mm

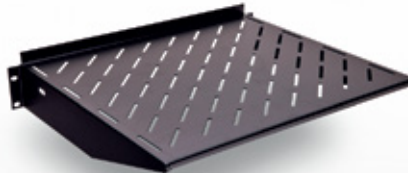


*Can be used in either orientation*

### 2RU 19" Fixed Shelves

Part Number: IP-RCLF240  
Depth: 400mm

Part Number: IP-RCLF250  
Depth: 500mm



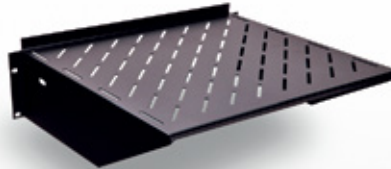
*Can be used in either orientation*

### 3RU 19" Fixed Shelves

Part Number: IP-RCLF340  
Depth: 400mm

Part Number: IP-RCLF350  
Depth: 500mm

Part Number: IP-RCLF360  
Depth: 600mm

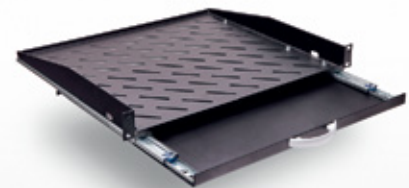
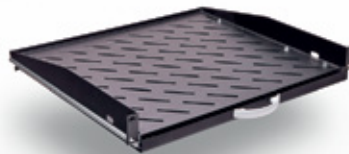


*Can be used in either orientation*

### 1RU 19" Sliding Shelf

Part Number: IP-RCHF130  
Depth: 225mm

Part Number: IP-RCHF140  
Depth: 325mm



### 19" Rack Mounted Enclosure Bracket

Part Number: IP-RACKBRACKET4025-SET  
Depth: 254.5mm

(1 Set = 2 x brackets as shown including fasteners)



## Features & Specifications

# 19" Accessories

**Standard:** Compatible with 19" racks EIA-310-D, RoHS

**Slotted Din Rail Material:** Electrogalvanised Steel 7.5 x 35 RoHS Compliant. Standard 35mm wide symmetrical TS35 DIN Rail compatible with EN50022 and DIN46277-3.

### 1RU 19" DIN Terminal Rail

Part Number: IP-SDDINPANEL1

### 1RU 19" Cover Panel

Part Number: IP-SDCOVER1

### 1RU 19" Cover Panel (Ventilated)

Part Number: IP-EMH1



### 2RU 19" DIN Terminal Rail

Part Number: IP-SDDINPANEL2

### 2RU 19" Cover Panel

Part Number: IP-SDCOVER2

### 2RU 19" Cover Panel (Ventilated)

Part Number: IP-EMH2



### 3RU 19" DIN Terminal Rail

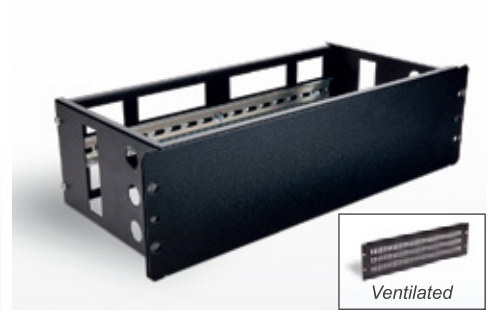
Part Number: IP-SDDINPANEL3

### 3RU 19" Cover Panel

Part Number: IP-SDCOVER3

### 3RU 19" Cover Panel (Ventilated)

Part Number: IP-EMH3



### 3RU 19" Distribution Board

Part Number: IP-SDDP3

(Supplied with Cover Panel)





## Features & Specifications

# 19" Accessories

**Standard:** Compatible with 19" racks EIA-310-D, RoHS

### 4RU 19" Rack Mounted DIN Rail Housing

Part Number: IP-SDDINBOX4RUU

### 4RU 19" Rack Mounted DIN Rail Housing

Part Number: IP-SDBOX4RU



### 6RU 19" Rack Mounted DIN Rail Housing

Part Number: IP-SDDINBOX6RU

### 6RU 19" Rack Mount Housing

Part Number: IP-SDBOX6RU



### 8RU 19" Rack Mounted DIN Rail Housing

Part Number: IP-SDDINBOX8RU

### 8RU 19" Rack Mount Housing

Part Number: IP-SDBOX8RU



### 80mm Castors/Wheels

Part Number: IP-080RMB; IP-080FRMB

80mm Castors/Non-break Wheels/  
Wheels with brake-Set of 2

Wheel Size: Ø80mm x 30mm Wide

Load Capacity: 120kg (Per wheel)



### Adjustable Feet (Set of 4)

Part Number: IP-TAM10X70

### 1RU 19" Cable Organiser

Part Number: IP-RNG1U19

### 2RU 19" Cable Organiser

Part Number: IP-RNG2U19







IP ENCLOSURES PTY LTD

ABN 17 168 921 319

Head Office: 19-27 Fren Chaplin Circuit, Bells Creek QLD 4551

[sales@ipenclosures.com.au](mailto:sales@ipenclosures.com.au) | [www.ipenclosures.com.au](http://www.ipenclosures.com.au)

T: 1300 576 094 | + 61 7 5450 1489

GLOBAL DISTRIBUTION: UK Europe USA UAE NZ Asia-Pacific