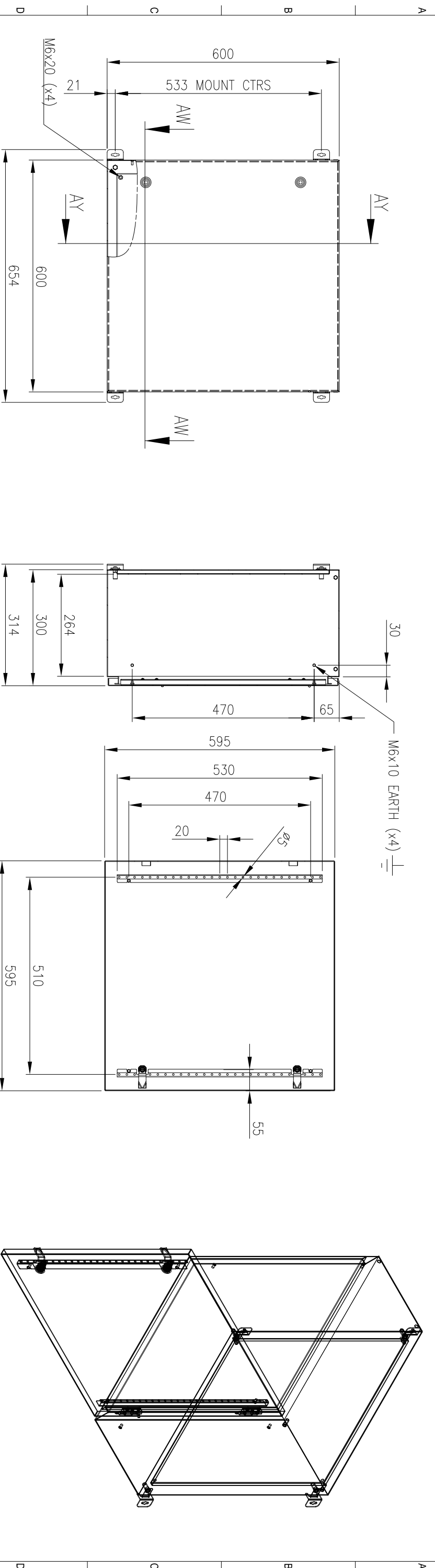


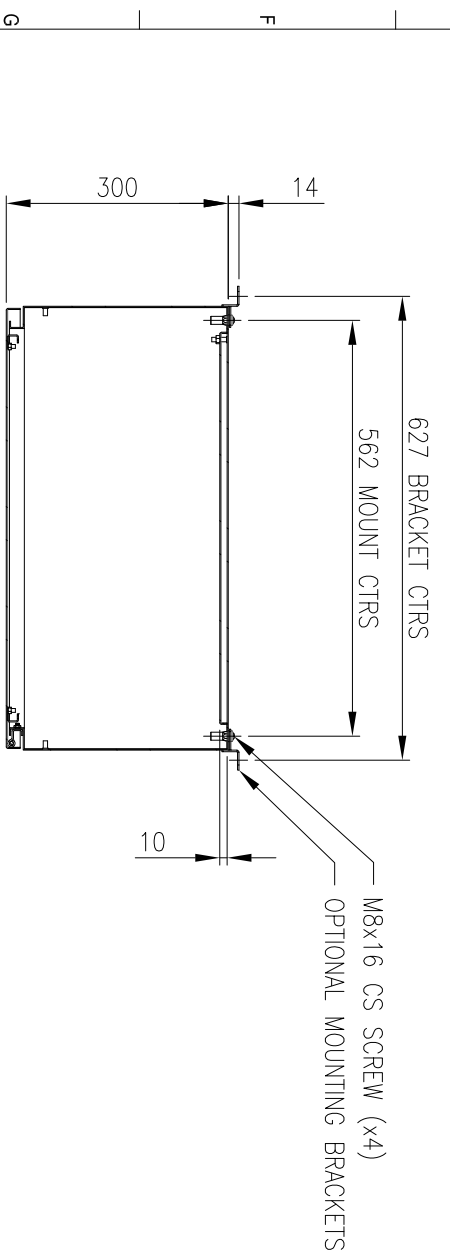
RevNo	Revision note	Date	Signature	Checked
3	GENERAL REVISION	9/7/19	IP	IP



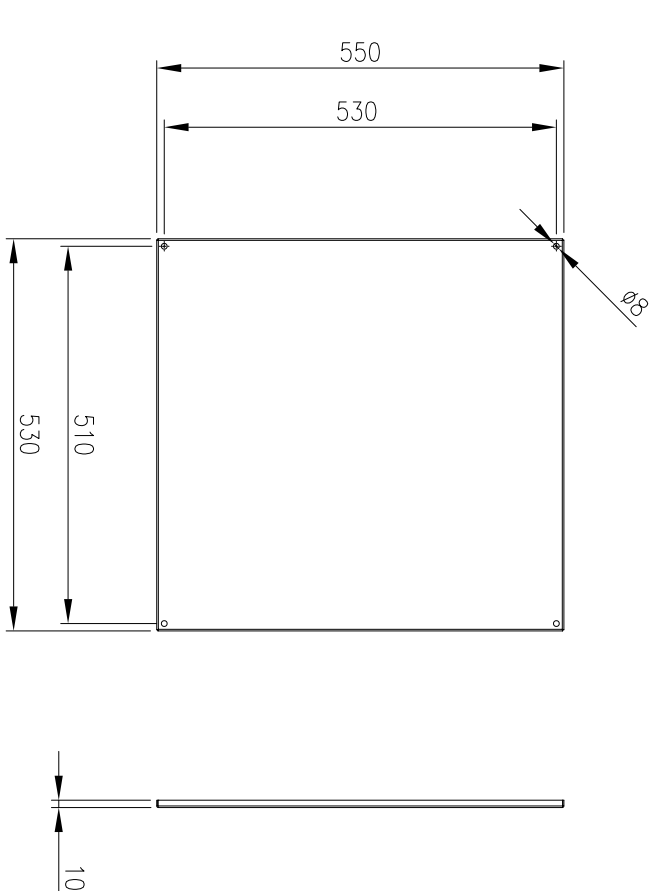
FRONT VIEW

SECTION AY-AY

INSIDE DOOR VIEW



SECTION AW-AW



DEVICE MOUNTING PLATE

**MATERIAL**  
 BODY: 1.5mm 316 STAINLESS STEEL  
 DOOR: 1.5mm 316 STAINLESS STEEL  
 DEVICE PLATE: 1.5mm GALV STEEL  
 SEAL: POLYURETHANE

MASS: 24.0kg

PROTECTION: IP66 IK10, NEMA4x  
 STANDARD: IEC62208, IEC/EN/AS60529

© IP ENCLOSURES 2016.  
 THIS DRAWING SHALL NOT BE COPIED OR REPRODUCED  
 WITHOUT AUTHORISATION FROM IP ENCLOSURES.  
 www.ipenclosures.com.au

Item#	Quantity	TradeName, designation, material, dimension etc.	Article No./Reference
IP		IP-SS6030-01	IP-SS6030-01

Designed by	Checked by	Approved by - date	Filename	Date	Scale
IP	IP	17/10/16	IP-SS6030-01	17/10/16	1:10

Item#	Quantity	TradeName, designation, material, dimension etc.	Article No./Reference
IP		IP-SS6030-01	IP-SS6030-01

1 2 3 4 5 6 7 8 9 10 11 12 13 14 15 16